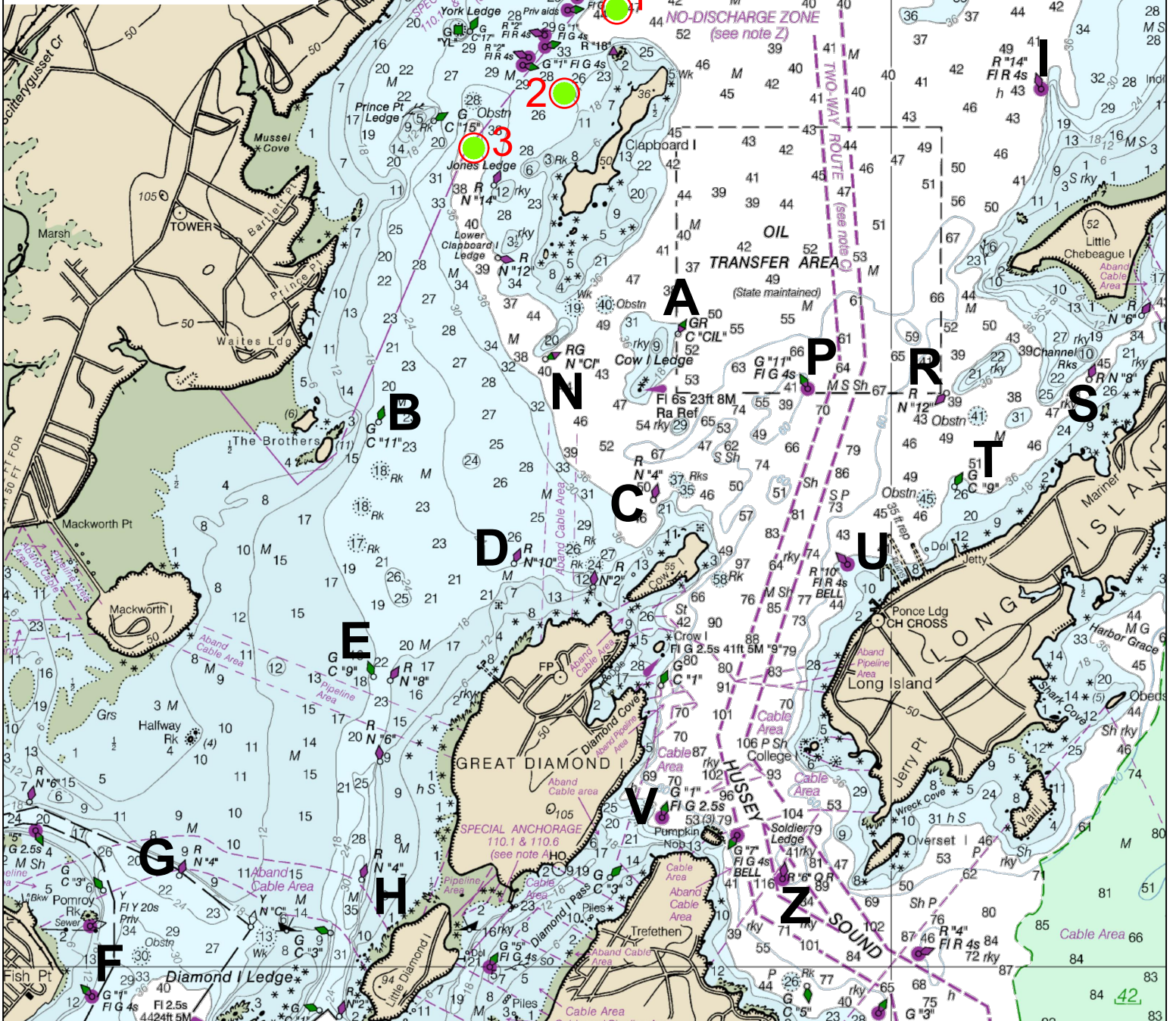


PORTLAND YACHT CLUB RACING MARKS



A	GR C "CIL"	N	Cow Is. Ledge	M	GR C "SI"	S	Sturdivant Is. Ledge
B	C "11"	E	The Brothers	N	RG N "CI"	W	Cow Is. Ledge
C	N "4"	NW	Cow Is.	P	G "11" FI G 4s	E	Cow Is. Ledge
D	N "10"	NW	Great Diamond Is.	R	N "12"	W	Channel Rocks
E	C "9"	W	Great Diamond Is.	S	N "8"	W	Channel Rocks
F	G "1" FI G 4s	Fish Point		T	C "9"	W	Long Is.
G	N "4"	NE Pomroy Rk		U	R "10" FI Bell		Ponce Landing
H	N "4"	NW Little Diamond Is.		V	G "1" FIG2.5s	W	Pumpkin Knob
I	R "14" FI R 4s	W Indian Pt. Cheb. Is.		W	Drop		Windward Mark
J	N "2"	SE Basket Is.		X	Drop		Start/Finish
K	G "3" FI G 2.5s	SW Basket Is.		Z	R "6" QR		Soldier Ledge, Hussey
L	Drop	Leeward Mark		Thursday Night Starting Areas: 			

Mark selection is by a committee of Race Officers and volunteers from Centerboard and Portland Yacht Clubs. Mark List compiled by T. Tolford, Graphics by J. Cady. Publish date: Spring 2020.